

OUR VISION

Tools that are robust, combinable, and able to run in both real time and memory situations are what we provide. We design our tools to work within the proprietary GDTbus protocol so that everything is modular in nature. By doing so it allows our customers to pick and choose what sensors they want to provide for their services. It all works together and simultaneously. There are no “project” tools in our product line, we make sure that our customers maintain the flexibility to add to what they currently own.

Our telemetry is designed to be simple to use and implement in older units in the field as well as new ones. The telemetry is fully compatible with the Warrior Well Logging System and does not require any additional cards or panels to get 50Kbps transmission rate. If our customers need more speed, we can obtain 200Kbps with additional hardware on surface.

When switching from running in real time to memory, you use the same sondes. Easy configuration for individual sonde sample rate(s), tool hibernation timing(s), and merging surface depth data to downhole tool data gives our customers the ability to quickly swap to alternative conveyance methods. Our software has easy export ability to get the data into the hands of analysts quickly.

All connectors are standard “GO” pin, so our customers can use the auxiliary equipment they already own and maintain. We also carry a wide assortment of running gear to fully prepare for difficult logging situations if a key part is missing from a customer’s inventory.



24 HOUR SUPPORT

Our support team is available to help when issues arise day or night.

PARTNER NOT SUPPLIER

We establish relationships that go past the point of sale.

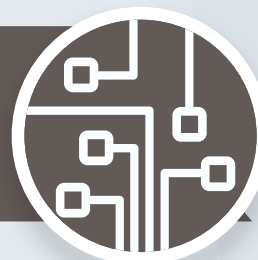


CONFIDENCE IN EXPERIENCE

Our mechanical, electrical, and petroleum engineers have come from the wireline field.

TARGETED TECHNOLOGY

R&D focused on our partners needs and requests to impact the market at a local level.



Smart Control Panel SCP



DESCRIPTION

The Smart Control Panel (SCP) is used in conjunction with the Addressable Motorized Release Tool (AMR), the Tension CCL Tool (TCT), and the Safety Protect Tool (SPT) to deliver safe and effective perforation operations in field.

APPLICATIONS

- Depth system
- Casing collar detection
- Downhole tension logging
- Downhole release control
- Safety protection control
- Perforating switch control

SPECIFICATIONS



OPERATING SYSTEM	Win XP, Win 7, or Win 10
CPU	Pentium II or higher
SWICTH CARRIER SIZE	35MM X 28MM X 16MM
MAX TEMPERATURE	80°C
AC POWER	100~250V 50~60Hz

Addressable Motorized Release AMR



DESCRIPTION

The Addressable Motorized Release Tool (AMR) can separate into two sections from surface using the AMR surface panel. Fully electromechanical operation requires no explosives. When disconnected a standard 1" or 1 3/4" fishing neck remains looking up for easy reconnection.

Up to four AMRs can be combined in the same string to give even more flexibility for sensitive tools and conditions. The 2 3/4" AMR is fully compatible with common addressable switches used in the field.

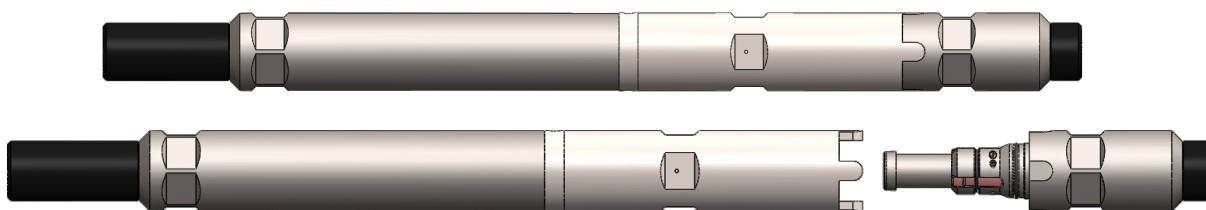
Since the design is built around motoring the connection point, well site pre-check can be done to ensure operation right before entering the hole.

APPLICATIONS

- Risk prone environments such as deviated wells, explosive jobs, and tight restrictions
- Multi-stage frac operations
- Plug back and perforate operations

SPECIFICATIONS

DIAMETER	1 11/16" (43mm)	2 3/4" (73mm)
MAX. TEMPERATURE	350°F (175°C)	
MAX. PRESSURE	15k psi (100MPa)	20k psi (138MPa)
LENGTH	26.38" (670mm)	30.70" (780mm)
MATERIALS	H2S Tolerant	
VOLTAGE	-45V ~ -80V	
RELEASE TIME	2.5 minutes	1 minute
RECONNECT TIME	2.5 minutes	1 minute
FISHING LOAD POST-SEPERATION	20,000lb (9,000kg)	55,000lb (24,950kg)
FISHING LOAD PRE-SEPERATION	8,000lb (3,600kg)	15,000lb (6,800kg)
CONNECTION	1 3/16" UN 12 TPI (GO)	1 5/8" 6RND ACME (Quick Connect)
FISHING NECK	1"	1 3/8"



Tension CCL Tool TCT



DESCRIPTION

The Tension CCL Tool (TCT) monitors tension and compression of the bottom hole string during perforation runs. Real time transmission of data allows higher confidence of issues that may arise during travel in and out of the hole. in Combinability with other logging tools and downhole tractors allows flexibility in the field. The built in collar locator provides depth correlation in extended reach environments.

APPLICATIONS

- Minimize risk associated with pump operations
- Lower stick and slip incidents during conveyance
- Collar identification

SPECIFICATIONS

DIAMETER	2 7/8" (73mm)
MAX. TEMPERATURE	350°F (175°C)
MAX. PRESSURE	20k psi (138MPa)
LENGTH	36.81" (935mm)
MATERIALS	H2S Tolerant
VOLTAGE	35V ~ 50V
TENSION RANGE	±10,000 lbf
TENSION ACCURACY	±1%
TENSION RESOLUTION	25 lbf
TOP CONNECTION	1 3/16" UN 12 TPI (GO)
BOTTOM CONNECTION	1 5/8" 6 ACME Box (Quick Change)
TOP OVERSHOT CONNECTION	2" 6 ACME



Safety Protect Tool SPT



DESCRIPTION

The Safety Protect Tool (SPT) connects or removes conductivity to the lower part of the tool through a downhole motor operation. A pin is either inserted or removed from a lower receiver to allow or remove electrical connection below the tool.

APPLICATIONS

- Removes risk of accidental perforation

SPECIFICATIONS

DIAMETER	2 7/8" (73mm)
MAX. TEMPERATURE	350°F (175°C)
MAX. PRESSURE	20k psi (138MPa)
LENGTH	20.8" (530mm)
MATERIALS	H2S Tolerant
VOLTAGE	30V ~ -50V
TOP CONNECTION	1 3/16" UN 12 TPI (GO)
BOTTOM CONNECTION	1 5/8" 6 ACME Box (Quick Change)
FISHING NECK	2" 6 ACME



Software



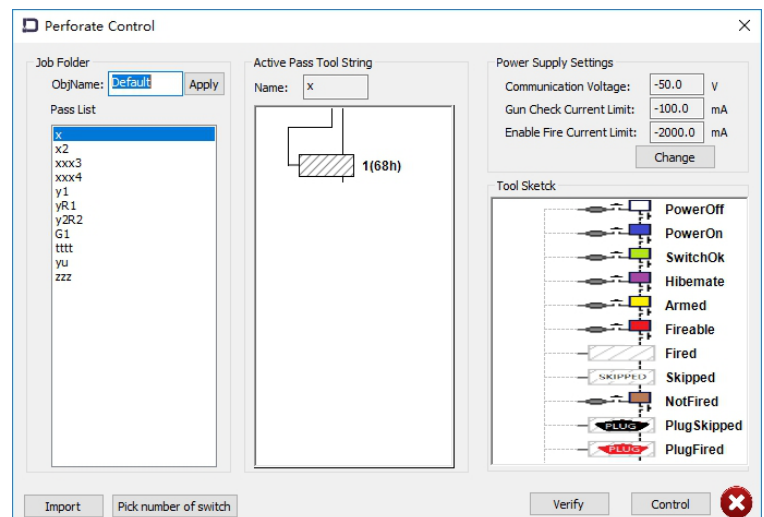
RELEASE CONTROL SOFTWARE

Controls the operation of the Addressable Motorized Release tool (AMR). Reads and displays currently connected addressable switches.



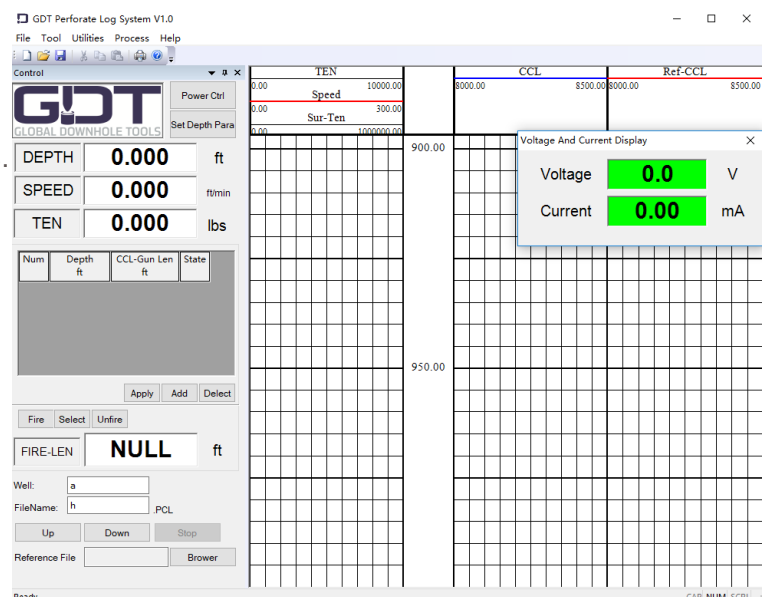
PERFORATION CONTROL

Software that addresses and operates switches connected line.



LOGGING

Display and record downhole tension and collar location from Tension CCL Tool (TCT). Software is also compatible with analog style casing collar tools. Software also gives real time output of speed and depth from encoder input.





Global Down Hole Tools, INC.
17575 Aldine Westfield, Rd.
Houston, TX 77073

www.GlobalDownholeTools.com